

Weather Report

Installation Guide

For any questions please contact

CSD@Conais.com



What Is This Web Part?

- A client-side React web part that displays live weather data in SharePoint.
- Fetches current conditions and a 5-day forecast from OpenWeatherMap.
- Provides AI-powered insights and context-aware tips.
- Fully configurable via the SharePoint property pane.

Key Features

- **Current Weather Panel**

Temperature, feels-like, humidity, pressure, wind speed, description

- **Insights**

“Conditions Analysis” & “Recommendation” based on temp, wind, humidity, precipitation

- **Weather Tips**

Contextual suggestions (e.g., carry an umbrella, stay hydrated, drive safely)

- **5-Day Forecast**

Daily cards + interactive line chart for temperature, humidity, wind or pressure

- **Metric Toggle**

Switch between °C, %, m/s, hPa charts

Inserting the Web Part

- Open the target SharePoint page and click Edit in the top right.
- Hover over a section, click the + icon to add a new web part.
- Search for “Weather Report” in the toolbox.
- Click CONAIS Weather Report Web Part to insert.
- Click Republish (or Save as draft) to save your changes.

Configuring the Web Part

- **Welcome Message:**

Upon first adding the web part, a welcome message will appear, guiding users to configure the web part. The message will provide a brief overview and instructions on how to get started.



Welcome to CONAIS Weather Service

Thank you for using our Weather Web Part. Get real-time weather updates, forecasts, and personalized insights to plan your day effectively.

Configuring the Web Part

- Click the "Configure Web Part" Button.

After reading the welcome message and guide, click the "Configure Web Part" button. This button will open the property pane on the right side of the screen.



Welcome to CONAIS Weather Service

Thank you for using our Weather Web Part. Get real-time weather updates, forecasts, and personalized insights to plan your day effectively.

Configure Web Part

Click on the **Configure Web Part** button to open configuration menu

Configuring the Web Part

- In the configuration menu:
 - Custom Title: Enter any heading you like.

Configure Weather Web Part

Enter your location details and title for the weather widget.

Custom Title

Country

City

Enter **Custom Title** for your Weather web part

Configuring the Web Part

- In the configuration menu :
 - Country: Select from the dropdown list.

Configure Weather Web Part

Enter your location details and title for the weather widget.

Custom Title

Country

City

Select **Country** from Dropdown

Configuring the Web Part

- In the configuration menu :
 - City: Select from the dropdown (filtered by your country).

Configure Weather Web Part

Enter your location details and title for the weather widget.

Custom Title

Weather Report

Country

City

Select **City** from Dropdown

Cancel Save Configuration

Configuring the Web Part

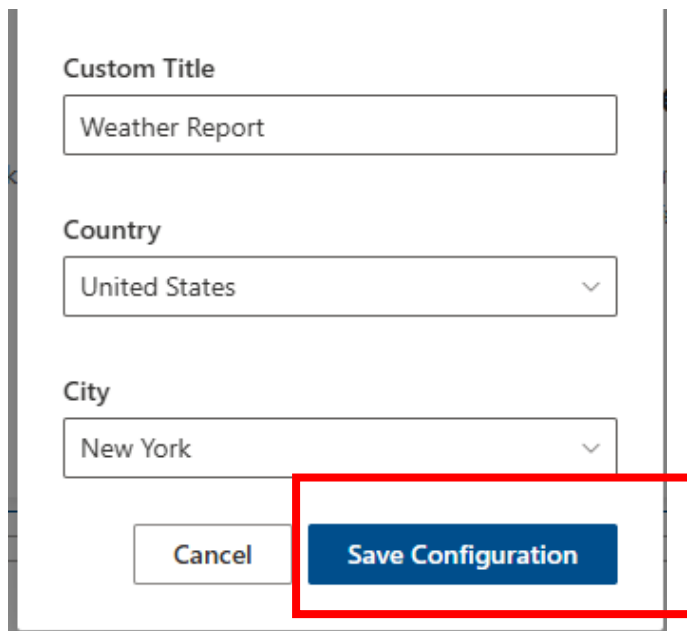
- In the configuration menu :
 - Custom Country/City: If your location isn't listed, type it here.

The image shows a configuration menu for a web part. It contains several input fields: 'Custom Title' with the text 'Weather Report', 'Country' with a dropdown menu showing 'Other (Custom)', 'Custom Country' with an empty text box, 'City' with a dropdown menu showing 'Other (Custom)', and 'Custom City' with an empty text box. The 'Custom Country' and 'Custom City' fields are highlighted with red rectangular boxes. Red arrows point from a text box on the right to these two highlighted fields.

Enter custom **Country** and **City** here if your location isn't listed

Configuring the Web Part

- In the configuration menu :
 - Click Save Settings at the bottom of the pane.



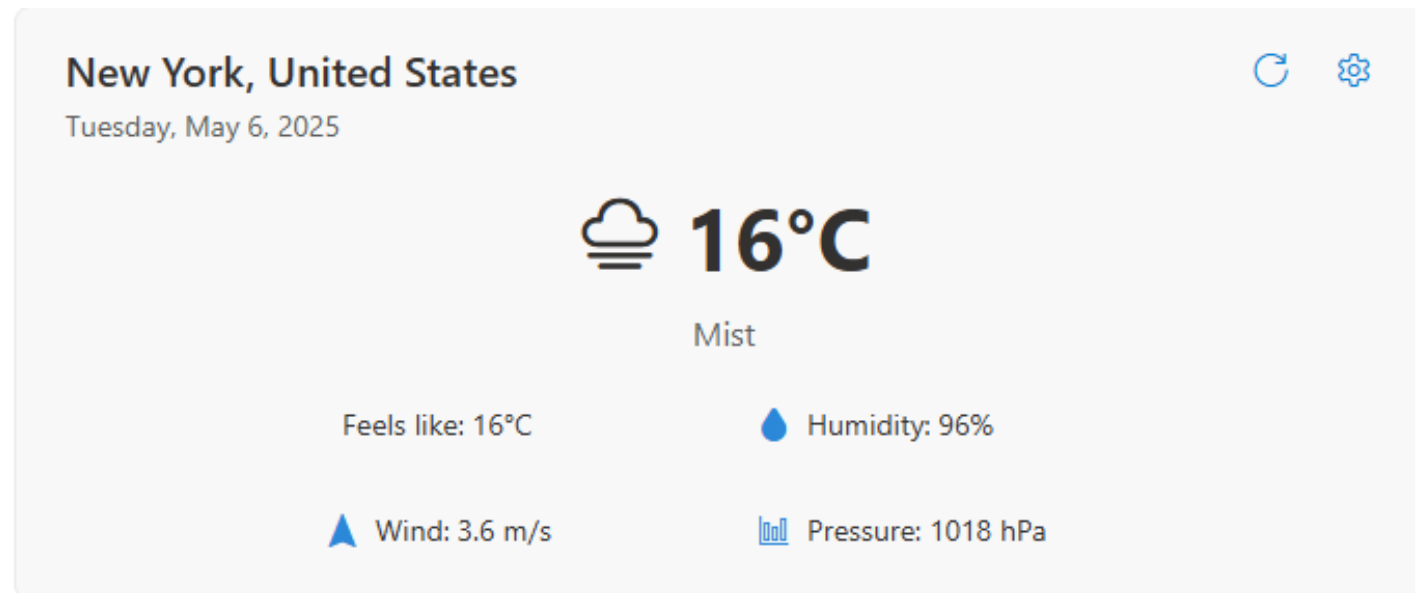
The screenshot shows a configuration pane with three input fields: 'Custom Title' with the value 'Weather Report', 'Country' with a dropdown menu showing 'United States', and 'City' with a dropdown menu showing 'New York'. At the bottom of the pane, there are two buttons: 'Cancel' and 'Save Configuration'. A red rectangular box highlights the 'Save Configuration' button, and a red arrow points from the text 'Click on Save Configuration to get the weather' to this button.

Click on **Save Configuration** to get the weather

- The web part will refresh and display the weather for your selected location.

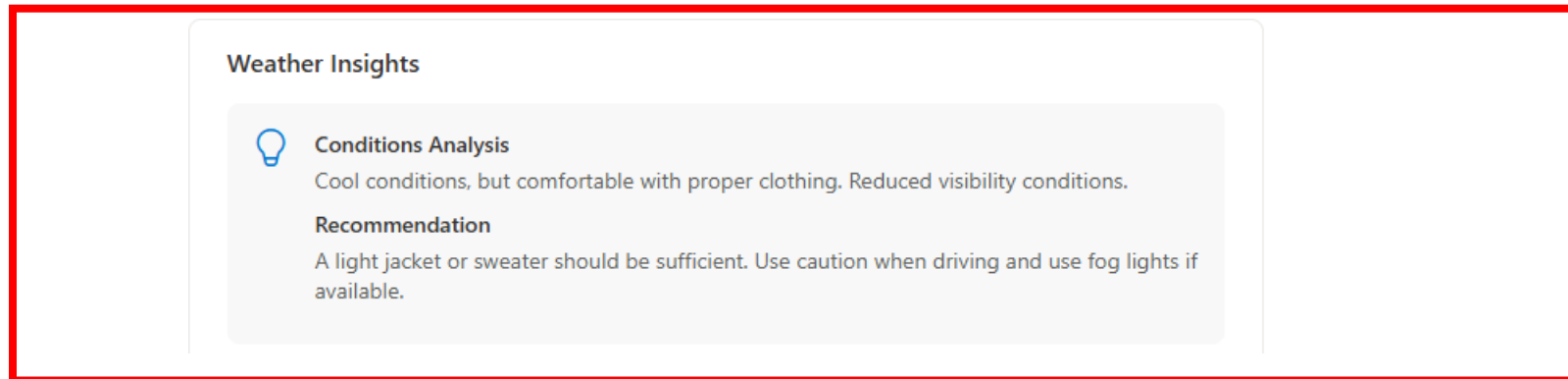
Key Features and Benefits of the Web Part

- **Current Weather Card** at top shows your city's conditions.



Key Features and Benefits of the Web Part

- **Insights Section** with analysis & recommendations.



Get the **weather insights and recommendations** in this section

Key Features and Benefits of the Web Part

- **Weather Tips** gallery for quick actionable advice.

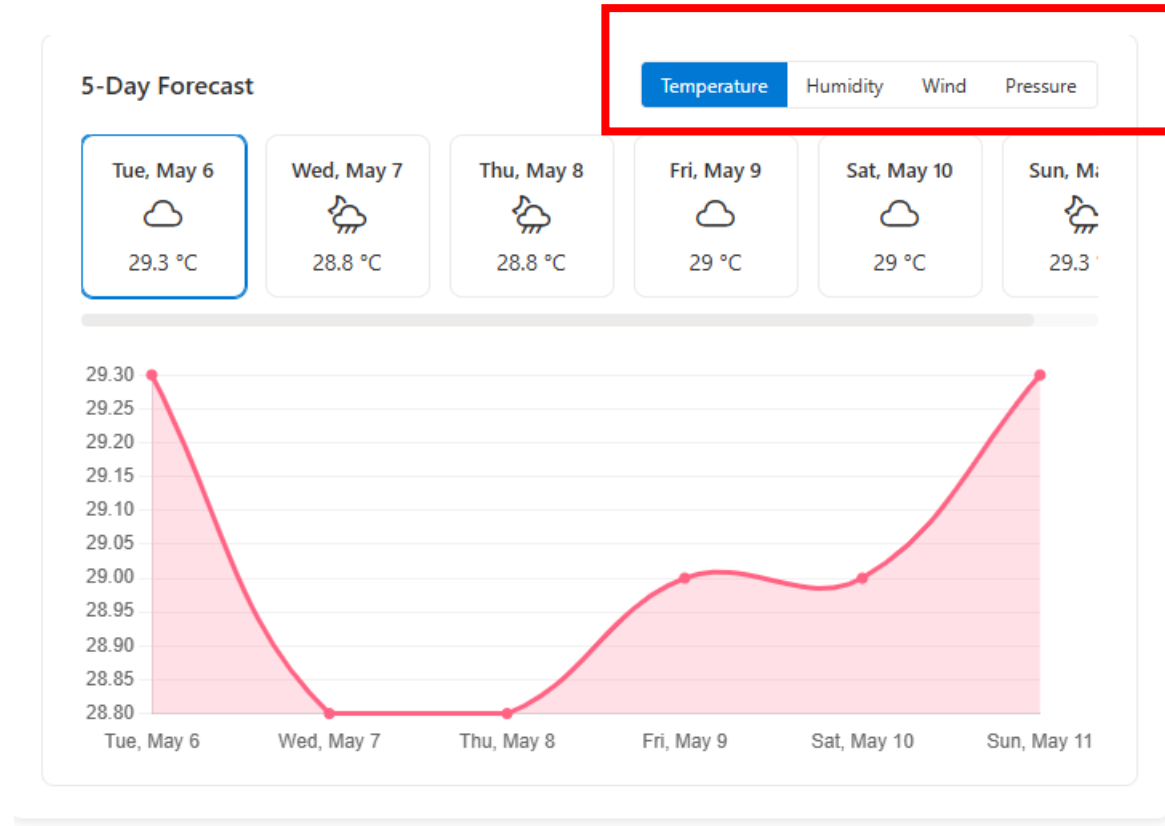
Get the **weather tips and advice** in this section



Key Features and Benefits of the Web Part

- **5-Day Forecast:**

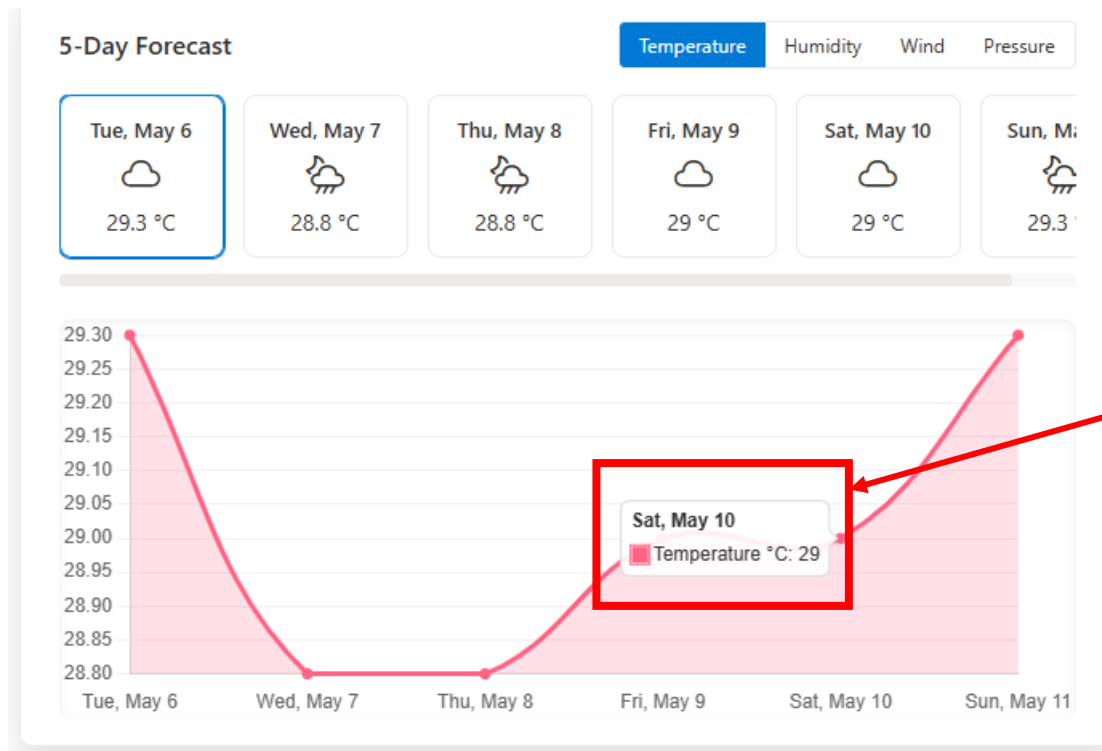
- Use the metric toggle (Temperature/Humidity/Wind/Pressure).



Toggle between
different metrics here

Key Features and Benefits of the Web Part

- **5-Day Forecast:**
 - Hover over the chart for precise values.

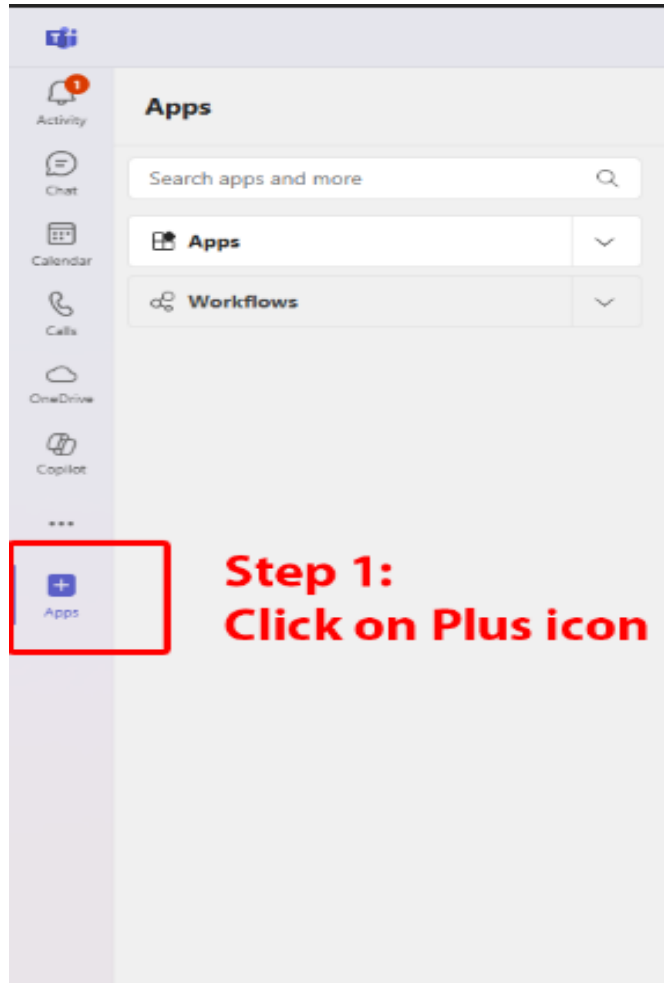


Hover over the graph for detailed values

Tips & Best Practices

- Choose clear, concise custom titles.
- Update your location if traveling or testing.
- Use metric toggle to compare humidity vs. temperature trends.
- Ensure internet access.
- Leverage insights to plan events, travel, and outdoor activities.

Steps to Add Weather Report App in Microsoft Teams

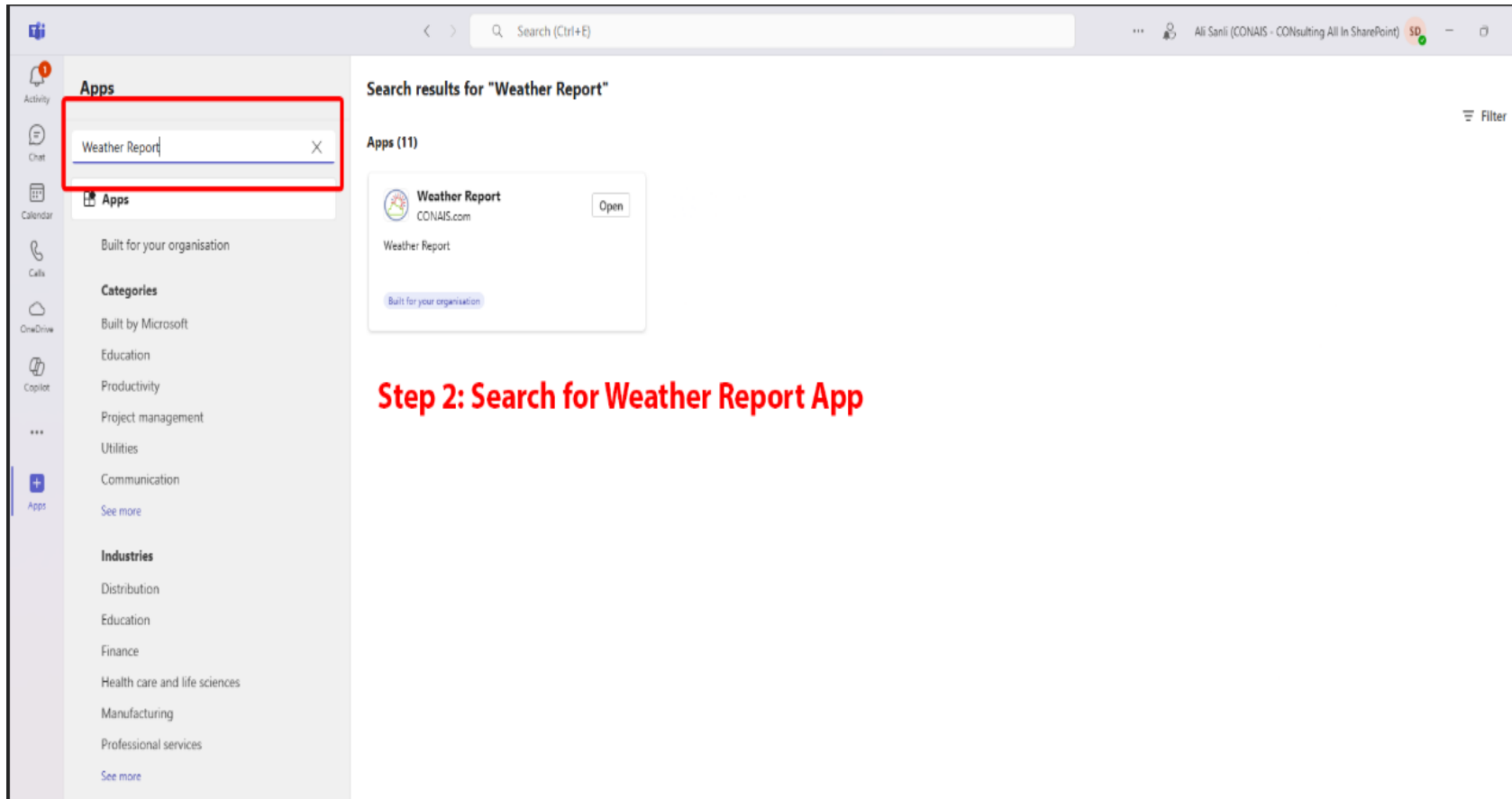


Step 1:
Click on Plus icon

Step 1: Click on the Apps Icon

- Open Microsoft Teams.
- On the left sidebar, click the **“Apps”** (plus icon) to explore available apps.

Steps to Add Weather Report App in Microsoft Teams

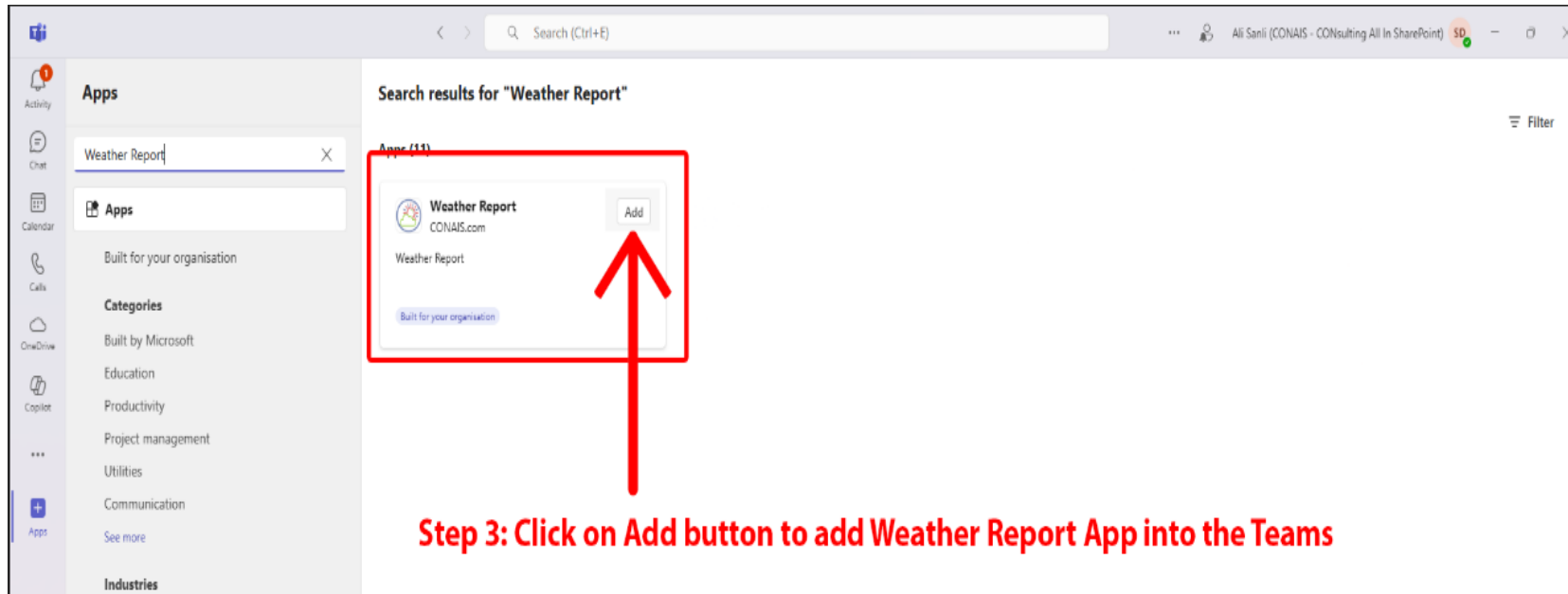


Step 2: Search for Weather Report App

Step 2: Search for "Weather Report"

- In the search bar, type **"Weather Report"** to find your custom app.

Steps to Add Weather Report App in Microsoft Teams

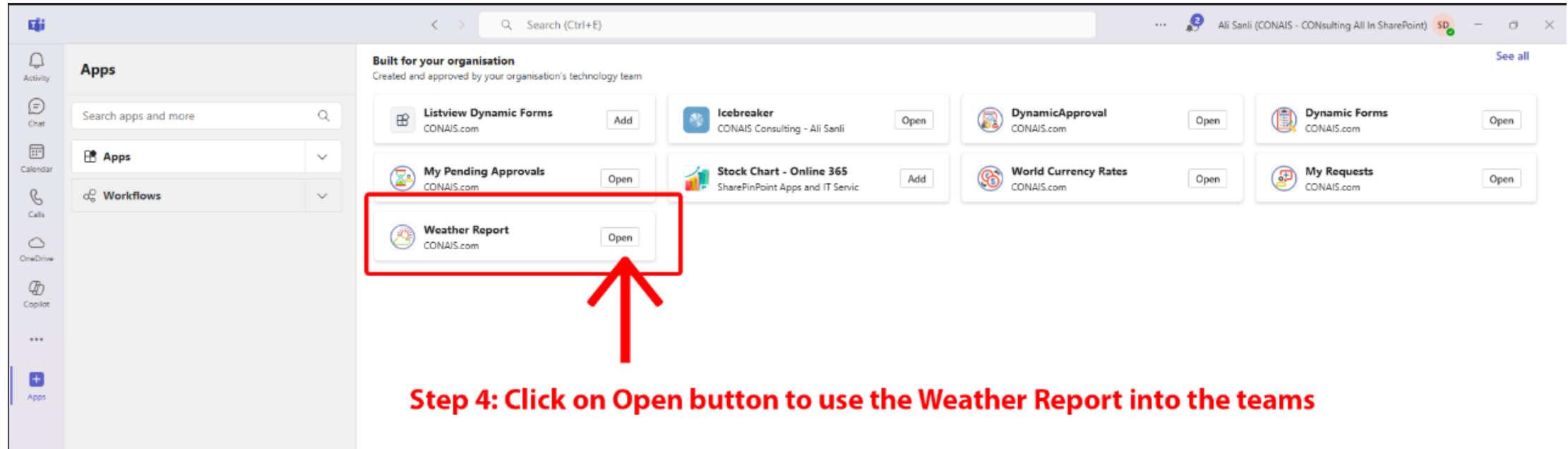


Step 3: Click on Add button to add Weather Report App into the Teams

Step 3: Click on "Add"

- Once the app appears, click the **"Add"** button to add it to your Teams environment.

Steps to Add Weather Report App in Microsoft Teams



Step 4: Click on Open button to use the Weather Report into the teams

Step 4: Click on "Open"

- After it's added, click the **“Open”** button to start using the **Weather Report** app.

Support & Resources

- **Troubleshooting:**

- “Location not found” → verify spelling or use custom fields.
- No data → check network access.

- **Contact:**

- For any questions please contact:
csd@conais.com